

LSB

Load Cell

Mode of Connection

Input+: Red
 Input-: White
 Output+: Green
 Output-: Black

Input Impedance: $410 \pm 10\Omega$
 Output Impedance: $350 \pm 10\Omega$

Share Beam Load Cell

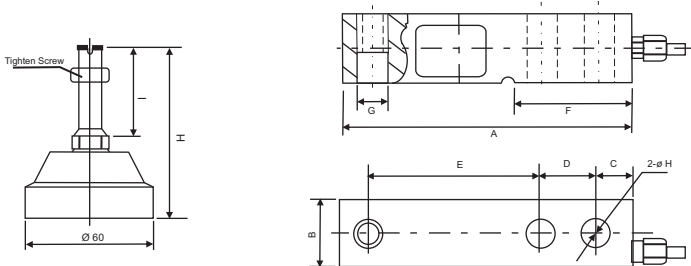
Protection Class Ip66
 Accuracy Class: C3
 Tool Steel Construction
 Capacity: 1,000, 2,000 & 5,000kgf.



Specifications:

Rated Output (mv/v)	$2.0 \pm 0.001\text{mV/V}$
Creep	0.02 %FS/30min
Total Error	0.02 % F.S
Recommended Excitation	5v ~ 12v (AC or DC)
Non-repeatability	0.01% F.S
Zero Balance	1 % F.S
Insulation Impedance	5000 M Ω
Operating Temp Range	$^{\circ} - 20 \text{ C} \sim +70 \text{ C}$
Compensated Temp Range	$^{\circ} - 20 \text{ C} \sim +60 \text{ C}$
Temp Effect on Load	0.02 % F.S
Temp Effect on Zero	0.02 % F.S
Construction	Alloy Steel

Dimensions



Capacity (kg)	A	B	C	D	E	F	G	H	I
1000	130	31	15.7	25.4	76.2	55.5	16	80	32
2000	130	31	15.7	25.4	76.2	55.5	16	80	32
5000	171	38	19.1	38.1	95.3	80	18	100	32

Reliable and Rugged! 