

LP Load Cell

Single Point Load Cell

Protection Class Ip67

Aluminum Construction

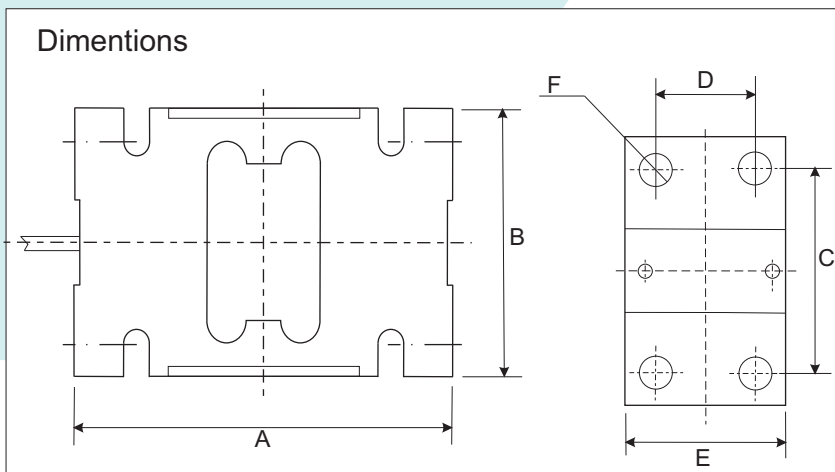
Capacity: 300, 500, 1000 & 2000kgf.

Mode of Connection

Input+: Red
 Input-: Black
 Output+: Green
 Output-: White

Input Impedance: $410 \pm 10\Omega$

Output Impedance: $350 \pm 10\Omega$



Capacity (kg)	A	B	C	D	E	F
300	146	95	70	36	60	M12 7H
500	146	95	70	36	60	M12 7H
1000	176	125	95	46	76	M16 7H
2000	176	125	95	46	76	M16 7H

Specifications:

Rated Load Capacity	300kg, 500kg, 1000kg & 2000kg.
Rated Out Put	2.0 ± 0.001 mV/V
Total Error	$\pm 0.02\%$ F.S
Recommended Excitation Voltage	5~12V (DC)
Maximum Excitation Voltage	24V (DC)
Zero Balance	$\pm 1\%$ F.S
Insulation Impedance	$\geq 5000M\Omega$
Safe Overload	150% F.S
Ultimate Overload	200% F.S
Operation Temperature Range	-30 ~ +70°C
Compensated Temperature Range	-20 ~ +60°C
Temperature Effect on Load	$\pm 0.02\%$ F.S/ 10°C
Temperature Effect on Zero	$\pm 0.02\%$ F.S/ 10°C
Construction	Aluminum

Reliable and Rugged! 